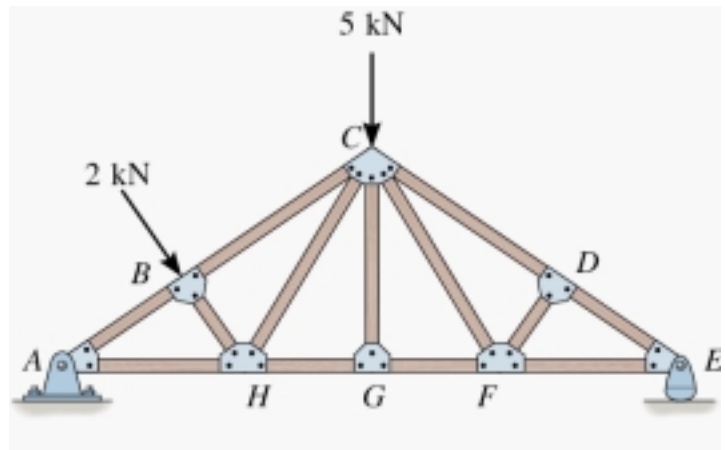


**Problem 1:**

In the following **Fink Roof Truss**, identify the zero-force members.



**Solution:**

If three members form a truss joint and there is no external load or support reaction at that joint and two of those members are collinear then the third member is a zero-force member. Hence, DC, CF and CG are zero-force members.

Removing the zero-force members, this will be our equivalent truss:

